

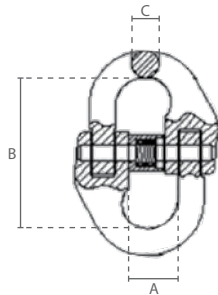


Anschlagteile Güteklasse 8 nach EN 1677

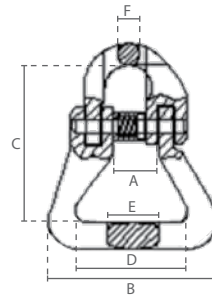
Verbindungsglieder Verbindungsglieder für Rundschlingen Gabelkopf-Lasthaken mit Hakensicherung



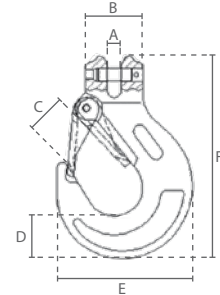
YE.8.015



YE.8.016



YE.8.043



| Technische Daten | | | Abmessungen (mm) | | |
|------------------|---------------------|--------------|------------------|-----|----|
| Artikelnummer | Tragfähigkeit (ton) | Gewicht (kg) | A | B | C |
| YE.8.015.06 | 1,120 | 0,1 | 15 | 42 | 8 |
| YE.8.015.07 | 1,500 | 0,2 | 19 | 55 | 9 |
| YE.8.015.08 | 2,000 | 0,2 | 20 | 61 | 10 |
| YE.8.015.10 | 3,150 | 0,3 | 25 | 68 | 12 |
| YE.8.015.13 | 5,300 | 0,7 | 29 | 87 | 15 |
| YE.8.015.16 | 8,000 | 1,2 | 35 | 109 | 20 |
| YE.8.015.20 | 12,500 | 2,1 | 41 | 122 | 24 |
| YE.8.015.22 | 15,000 | 2,9 | 48 | 142 | 26 |
| YE.8.015.26 | 21,200 | 4,5 | 58 | 158 | 31 |
| YE.8.015.32 | 31,500 | 8,2 | 67 | 205 | 38 |

| Technische Daten | | | Abmessungen (mm) | | | | | |
|------------------|---------------------|--------------|------------------|-----|-----|-----|----|----|
| Artikelnummer | Tragfähigkeit (ton) | Gewicht (kg) | A | B | C | D | E | F |
| YE.8.016.06 | 1,120 | 0,2 | 15 | 60 | 56 | 40 | 18 | 7 |
| YE.8.016.08 | 2,000 | 0,3 | 20 | 62 | 64 | 40 | 24 | 10 |
| YE.8.016.10 | 3,150 | 0,7 | 24 | 66 | 83 | 39 | 31 | 11 |
| YE.8.016.13 | 5,300 | 1,5 | 28 | 88 | 94 | 55 | 37 | 17 |
| YE.8.016.16 | 8,000 | 2,3 | 35 | 108 | 120 | 66 | 46 | 20 |
| YE.8.016.20 | 12,500 | 3,3 | 41 | 129 | 138 | 80 | 52 | 23 |
| YE.8.016.22 | 15,000 | 6,4 | 50 | 191 | 180 | 126 | 70 | 26 |
| YE.8.016.26 | 21,200 | 10,7 | 58 | 229 | 210 | 152 | 86 | 30 |
| YE.8.016.32 | 31,500 | 18,9 | 73 | 252 | 279 | 160 | 91 | 55 |

| Technische Daten | | | Abmessungen (mm) | | | | | |
|------------------|---------------------|--------------|------------------|-----|-----|----|-----|-----|
| Artikelnummer | Tragfähigkeit (ton) | Gewicht (kg) | A | B | C | D | E | F |
| YE.8.043.06 | 1,120 | 0,7 | 8 | 32 | 20 | 20 | 68 | 108 |
| YE.8.043.08 | 2,000 | 0,6 | 10 | 39 | 24 | 25 | 86 | 131 |
| YE.8.043.10 | 3,150 | 1,0 | 13 | 48 | 28 | 36 | 106 | 164 |
| YE.8.043.13 | 5,300 | 1,5 | 17 | 55 | 35 | 42 | 130 | 196 |
| YE.8.043.16 | 8,000 | 3,5 | 19 | 66 | 43 | 47 | 156 | 236 |
| YE.8.043.20 | 12,500 | 6,8 | 24 | 92 | 52 | 51 | 180 | 281 |
| YE.8.043.22 | 15,000 | 10,0 | 27 | 91 | 70 | 63 | 220 | 315 |
| YE.8.043.26 | 21,200 | 15,0 | 30 | 117 | 85 | 75 | 252 | 325 |
| YE.8.043.32 | 31,500 | 27,0 | 35 | 150 | 106 | 88 | 300 | 405 |