



## Premium Electric chain hoist DEH



YouTube

## Features

- » Robust housing made of aluminium. Housing covers made of hard plastic.
- » Suitable for a wide range of industrial applications.
- » Swivel load hook with safety latch.
- » Easy to disassemble for maintenance purposes.
- » Control system with SIEMENS / EATON relays.
- » Permanently lubricated transmission, ensures smooth and quiet operation.
- » Supplied with control switch, power cable and chain container.
- » Complies with the Machinery Directive 2006/42/EC. Supplied with test certificate, CE declaration of conformity and operating instructions.



Specifications							
Article code	Capacity ton	Lifting speed m/min	Load chain Øxmm	Chain falls	Power output kW	Net weight kg	Extra weight kg/m
DH.0.DEH.001253	0,125	8 / 2	4 x 12	1	0,4 / 0,1	21	0,35
DH.0.DEH.002503	0,250	8 / 2	4 x 12	1	0,4 / 0,1	21	0,35
DH.0.DEH.00523	0,500	4 / 1	4 x 12	2	0,4 / 0,1	23	0,7
DH.0.DEH.00503	0,500	8 / 2	5 x 15	1	0,72 / 0,18	31	0,55
DH.0.DEH.01023	1,000	4 / 1	5 x 15	2	0,72 / 0,18	33	1,1
DH.0.DEH.01003	1,000	8 / 2	7 x 21	1	1,6 / 0,4	49	1,1
DH.1.DEH.01500.01	1,500	Conversion kit 2,000 ton » 1,500 ton					
DH.0.DEH.02003	2,000	4 / 1	7 x 21	2	1,6 / 0,4	51	2,2
DH.0.DEH.03003	3,000	6 / 1,5	11,2 x 34	1	3,6 / 0,9	91	2,7
DH.0.DEH.05003	5,000	3 / 0,75	11,2 x 34	2	3,6 / 0,9	102	5,4

Specifications	
Operating voltage	400-440V / 50Hz / 3Ph
Lifting speed	Double speed
Load chain	Galvanised RUD® load chain according to EN 818-7-DAT/DT
Control cable	Standard lengths supplied to match the lifting height. With plug connection.
Power cable	6 meters without plug
Housing protection	IP 55
Control protection	IP 65
Classification	0,125 - 2 ton, 5 ton: M5/2m (ISO/FEM) 3,000 ton: M4/1Am (ISO/FEM)
Duty cycle / Starts per hour	0,125 - 2 ton, 5 ton: 40% / 240 3,000 ton: 30% / 180
Insulation class	F
Operating temperature	-10°C - +40°C
Load type	Goods, may not be used to lift or transport people





Premium Electric chain hoist DEH

Protection	
Control switch	24V pendant control with emergency stop
Overload protection	Adjustable slip clutch (WLL 0,125 ton: The clutch only slips at a load of approximately 200kg.)
Brake	Electromagnetic spring pressure brake, holds the load in the event of power failure
Limit switch	Electro-mechanical upper and lower limit switch
Thermal protection	Protected through heat sensor
Phase sequence protection	Equipped with a phase sequence protector to guard the hoist against potential damage due to sequence change.

Optional accessories



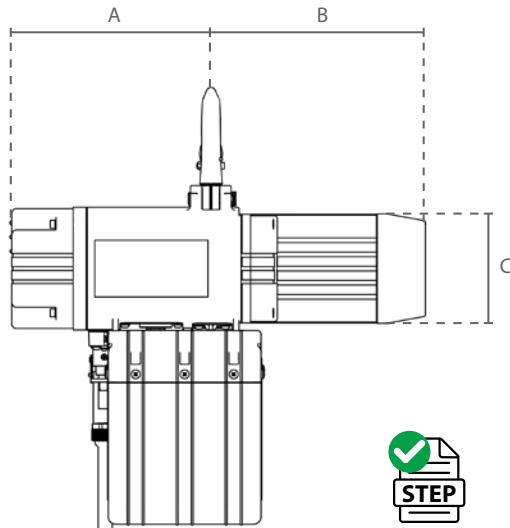
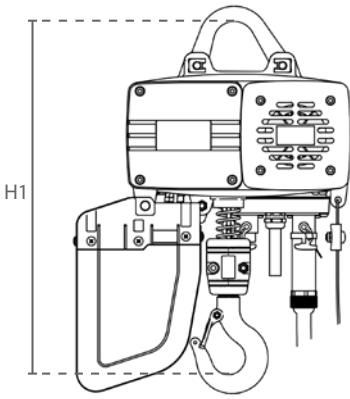
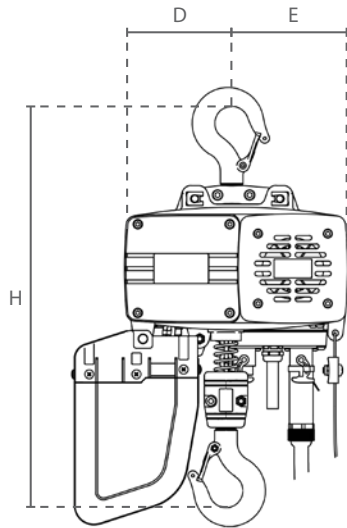
DH.1.DEH.XXXX.32



DH.SG.DHM.LLS



DH.1.DEH.JACKET



Dimensions (mm)							
Article code	A	B	C	D	E	H	H1
DH.0.DEH.001253	211	228	115	114	123	420	373
DH.0.DEH.002503	211	228	115	114	123	420	373
DH.0.DEH.00523	211	228	115	114	123	495	440
DH.0.DEH.00503	231	204	165	118	162	465	420
DH.0.DEH.01023	231	204	165	118	162	584	520
DH.0.DEH.01003	264	245	175	128	187	575	520
DH.0.DEH.02003	264	245	175	150	165	690	595
DH.0.DEH.03003	300	322	202	183	207	703	623
DH.0.DEH.05003	300	322	202	198	192	905	771





## Premium Electric chain hoist DEH



DH.0.DED



DH.0.DEY

## Features

- » Electric chain hoist mounted on low headroom (electric) trolley.
- » Balance support wheels enable smooth travelling along the beam.
- » Safety bars serve as fall-, breaking- and impact protection. Additionally equipped with tilting protection.
- » Permanently lubricated, ball bearing mounted wheels allow for smooth traversing.
- » Suitable for most I- and H-beam profiles.

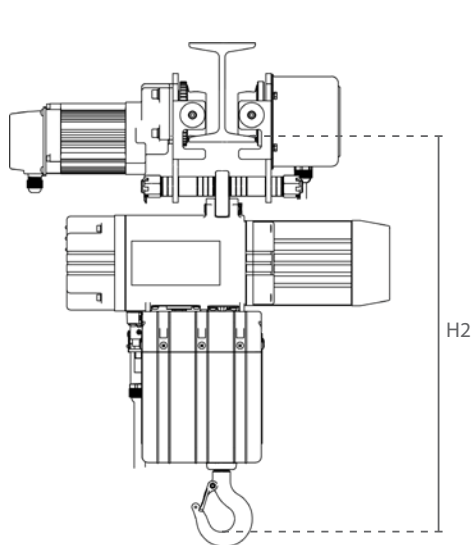
Article code	Capacity ton	Chain falls	Specifications		Net weight kg	Min. height (H2) mm
			Traversing speed m/min	Beam width mm		
DH.0.DED.001253	0,125	1	20 / 6,7	74-300	51	438
DH.0.DED.002503	0,25	1	20 / 6,7	74-300	51	438
DH.0.DED.00523	0,5	2	20 / 6,7	74-300	53	505
DH.0.DED.00503	0,5	1	20 / 6,7	74-300	61	480
DH.0.DED.01023	1	2	20 / 6,7	74-300	63	589
DH.0.DED.01003	1	1	20 / 6,7	74-300	79	578
DH.0.DED.02003	2	2	20 / 6,7	74-300	82	670
DH.0.DED.03003	3	1	20 / 6,7	100-310	152	710
DH.0.DED.05003	5	2	20 / 6,7	100-310	172	870

Article code	Capacity ton	Chain falls	Specifications		Net weight kg	Min. height (H3) mm
			Beam width mm			
DH.0.DEY.001253	0,125	1	74-300		37	438
DH.0.DEY.002503	0,25	1	74-300		37	438
DH.0.DEY.00523	0,5	2	74-300		39	528
DH.0.DEY.00503	0,5	1	74-300		47	480
DH.0.DEY.01023	1	2	74-300		49	585
DH.0.DEY.01003	1	1	74-300		65	578
DH.0.DEY.02003	2	2	74-300		73	670
DH.0.DEY.03003	3	1	100-310		125	710
DH.0.DEY.05003	5	2	100-310		158	870

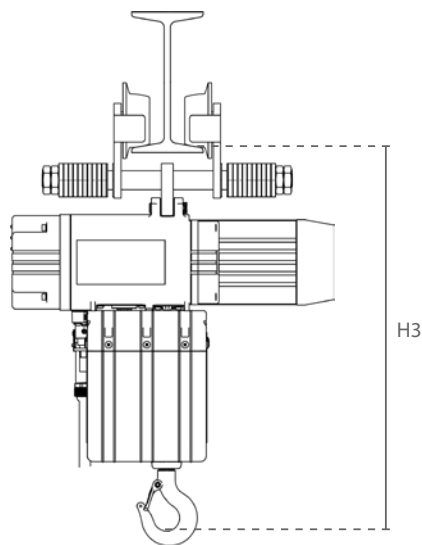




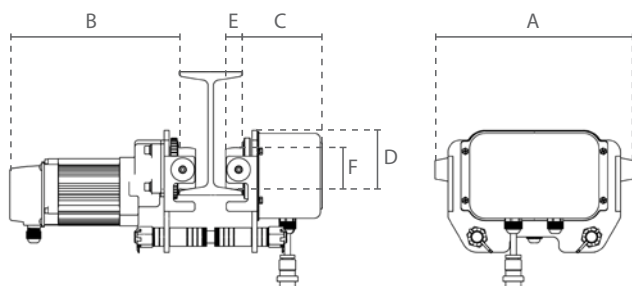
## Premium Electric chain hoist DEH



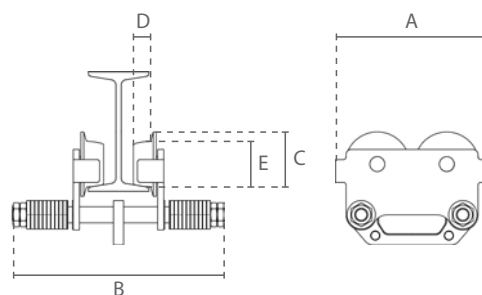
DH.0.DED



DH.0.DEY



DH.0.DHM



DH.0.026

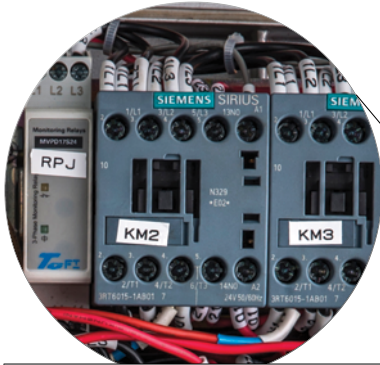
Specifications					Dimensions (mm)					
Article code	Capacity ton	Power output kW	Min. radius m	Net weight kg	A	B	C	D	E	F
DH.0.DHM.001253	0,125	0,2 / 0,07	1	30	322	280	134	96	22	68
DH.0.DHM.002503	0,250	0,2 / 0,07	1	30	322	280	134	96	22	68
DH.0.DHM.00523	0,500	0,2 / 0,07	1	30	322	280	134	96	22	68
DH.0.DHM.00503	0,500	0,2 / 0,07	1	30	322	280	134	96	22	68
DH.0.DHM.01023	1,000	0,2 / 0,07	1	30	322	280	134	96	22	68
DH.0.DHM.01003	1,000	0,2 / 0,07	1	30	322	280	134	96	22	68
DH.0.DHM.02003	2,000	0,4 / 0,13	1,2	31	322	282	136	103	22	75
DH.0.DHM.03003	3,000	0,4 / 0,13	1,6	61	388	308	140	127	26	96
DH.0.DHM.05003	5,000	0,4 / 0,13	1,8	70	428	310	142	132	29	110

Specifications				Dimensions (mm)				
Article code	Capacity ton	Min. radius m	Net weight kg	A	B	C	D	E
DH.0.02600125	0,125	1	16	238	385	70	22	58
DH.0.02600250	0,250	1	16	238	385	70	22	58
DH.0.02600520	0,500	1	16	238	385	70	22	58
DH.0.02600500	0,500	1	16	238	385	70	22	58
DH.0.02601020	1,000	1	16	238	385	70	22	58
DH.0.02601000	1,000	1,2	16	273	408	109	28	90
DH.0.02602000	2,000	1,2	22	273	430	109	28	90
DH.0.02603000	3,000	1,6	34	436	488	141	38	122
DH.0.02605000	5,000	1,8	56	436	488	141	38	122





Premium Electric chain hoist DEH



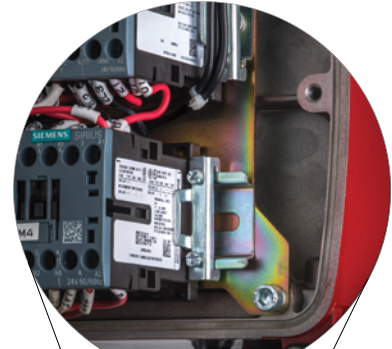
Reliable relays



EATON  
0,125 ton  
- 0,250 ton



SIEMENS  
0,500 ton  
- 5,000 ton



Easily exchangeable relays mounted on a steel plate



Convenient plug&play connections



Upper and lower limit micro switch



High quality, durable chain end buffer





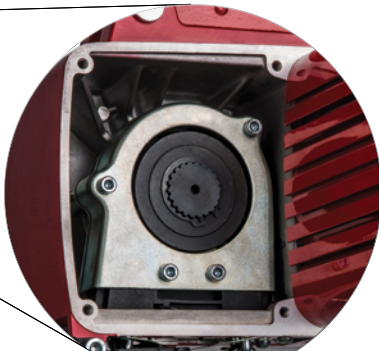
Premium Electric chain hoist DEH



Easily reachable and adjustable slip clutch



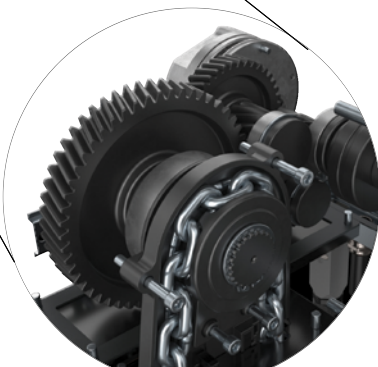
RUD<sup>®</sup> load chain



Chain guide easily accessible for maintenance purposes



Ergonomic control



Gearbox designed for intensive use



Robust chain container





## Premium Electric chain hoist DEH

			Specifications										
Capacity	Load chain	Chain falls	Hoisting height										
ton	Øxmm		≤3	≤6	≤9	≤12	≤15	≤18	≤25	≤30	≤36	≤50	
0,125	4 x 12	1	DSA1				DFA2			DFA3			
0,250	4 x 12	1	DSA1				DFA2			DFA3			
0,500	4 x 12	2	DSA1		DFA2		DFA3						
0,500	5 x 15	1	DSB1				DFB2			DFB3			
1,000	5 x 15	2	DSB1		DFB2		DFB3						
1,000	7 x 21	1	DSC1		DFC2			DFC3		DTC4			
2,000	7 x 21	2	DSC1	DFC2		DFC3		DTC4					
3,000	11,2 x 34	1	DFD1				DFD2						
5,000	11,2 x 34	2	DFD1		DFD2								

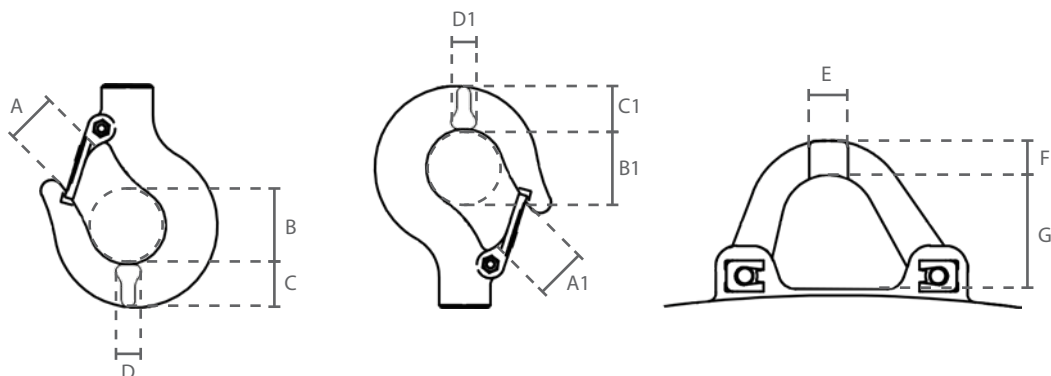
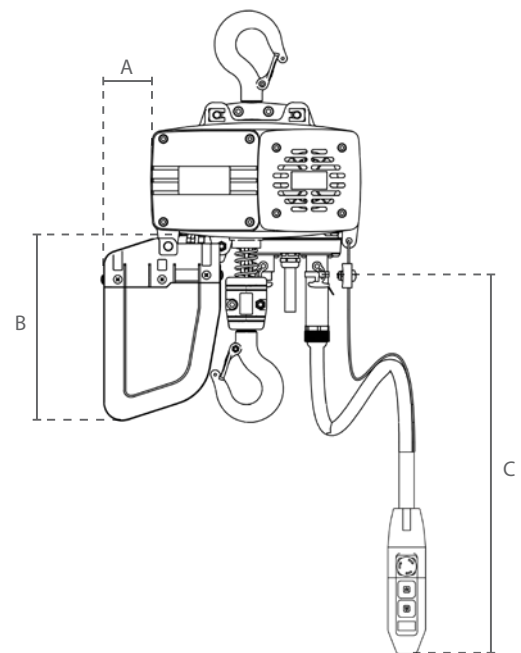
DSxx / DTxx = Chain bucket

DFxx = Chain bag

Dimensions (mm)			
Article code	Max. chain length	A	B
DSA1	12 m	56	215
DSB1	12 m	63	260
DSC1	6 m	87	276
DFA2	25 m	55	307
DFA3	36 m	105	307
DFB2	25 m	60	426
DFB3	36 m	108	418
DFC2	18 m	65	473
DFC3	30 m	98	663
DTC4	50 m	155	472
DFD1	12 m	118	426
DFD2	25 m	118	573

### Available lengths of the control cable (C)

min. 6 m
10 m
15 m
20 m
max. 25 m



Dimensions (mm)												
Article code	A	B	C	D	A1	B1	C1	D1	E	F	G	
DH.0.DEH.001253	23	36	20	18	23	36	20	18	18	16	53	
DH.0.DEH.002503	23	36	20	18	23	36	20	18	18	16	53	
DH.0.DEH.00523	27	40	22	18	27	40	22	18	18	22	53	
DH.0.DEH.00503	27	40	22	18	27	40	22	18	20	18	59	
DH.0.DEH.01023	31	45	24	20	31	45	24	20	20	22	59	
DH.0.DEH.01003	31	45	24	20	31	45	24	20	23	22	62	
DH.0.DEH.02003	38	53	43	27	38	53	43	27	23	22	62	
DH.0.DEH.03003	38	53	43	27	38	53	43	27	33	30	74	
DH.0.DEH.05003	52	75	51	35	52	75	51	35	33	30	74	



Hooks and brackets have minor tolerances and should always be measured and recorded at the start of operation. These values are for reference only.





YouTube



Watch the product video!

*\* click on the link \**



Nederlands

<https://youtu.be/zyZp5x0Ogd8>



English

<https://youtu.be/PmDD7nsrIGw>



Deutsch

<https://youtu.be/hD-nbCQm3P8>



Français

<https://youtu.be/JInvP16ODNw>



Español

<https://youtu.be/00VBnFyTmB0>



Italiano

<https://youtu.be/Yp41sYjcEyw>



Dansk

<https://youtu.be/f1ZN2H3hfcc>



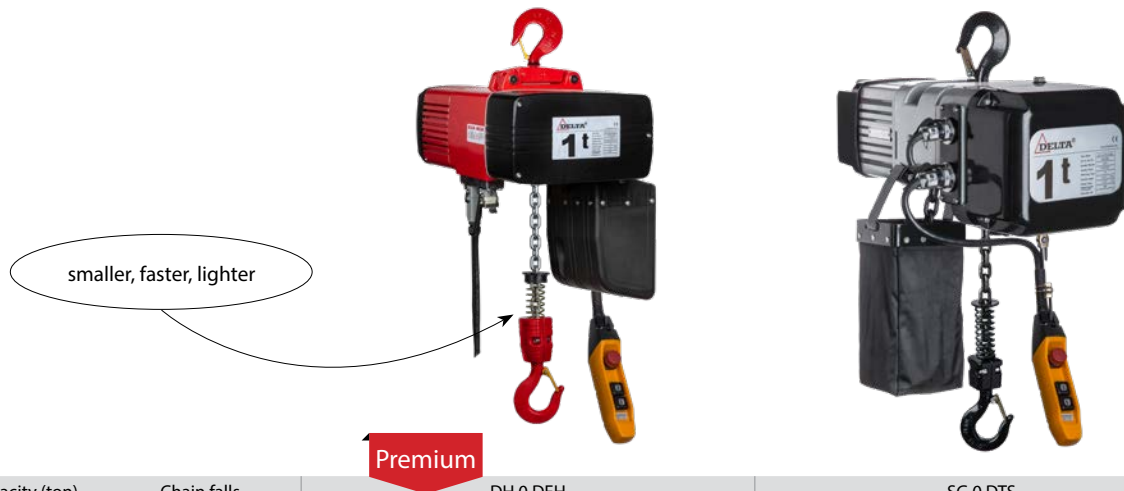
Suomalainen

<https://youtu.be/pGAGfRgnhuk>

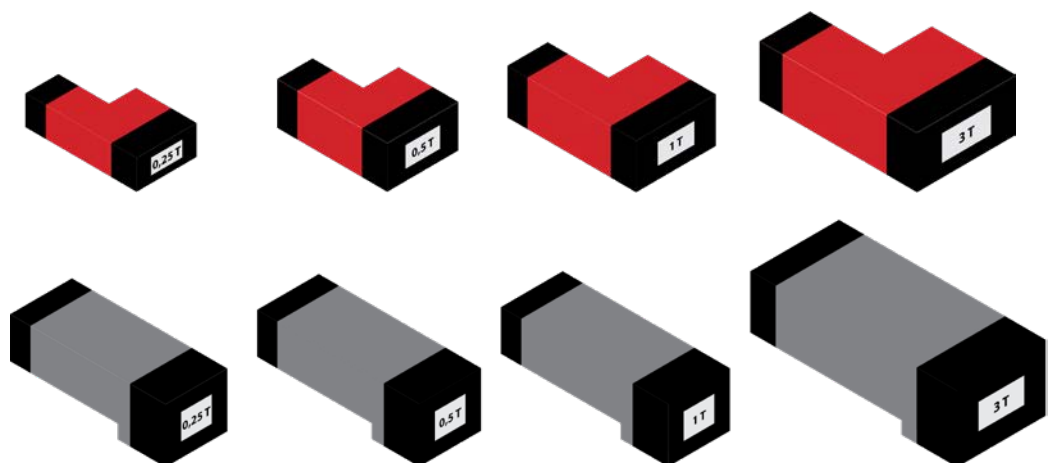




## Electric chain hoist comparison 400V



	Capacity (ton)	Chain falls	DH.0.DEH	SG.0.DTS
Lifting speed m/min	0,250	1	8 / 2	7 / 2,3
	0,500	1	8 / 2	7,6 / 2,5
	1,000	1	8 / 2	5 / 1,7
	2,000	2	4 / 1	2,5 / 0,85
	3,000	1	6 / 1,5	6 / 2
	5,000	2	3 / 0,75	3 / 1
Net weight kg	0,250	1	21	50
	0,500	1	31	51
	1,000	1	49	58
	2,000	2	51	65
	3,000	1	91	116
	5,000	2	102	130
Available with	mounted push trolley		✓	✓
	mounted electric trolley		✓	✓
	plug&play radio remote control		✓	✓
	eye suspension & protective cover		✓	✗



Housing protection	IP 55		
Classification / Duty cycle	3,000 ton	M5/2m 40%	
		M4/1Am 30%	M5/2m 40%
Control voltage	24V		
Overload protection	Slip clutch		
Limit switch	Micro switch for highest and lowest position		
Load chain	RUD		
Relays	SIEMENS / EATON		