



Pneumatic chain hoist



Features

- » Sealed and noise reduced planetary gearbox enables heavy duty cycles.
- » Control for variable speed.
- » Shock and corrosion resistant body.
- » Vane lifting motor for maximum torque.
- » Suitable for potentially dangerous and explosive environments. ATEX certificate upon request.
- » Supplied without air dryer and F.R.L unit.
- » Supplied with control and chain container.
- » Complies with the Machinery Directive 2006/42/EC. Supplied with test certificate, CE declaration of conformity and operating instructions.

Specifications							
Article code	Capacity	Lifting speed	Load chain	Chain falls	Power output	Net weight	Extra weight
	ton	m/min	Øxmm		kW (6 bar)	kg	kg/m
CD.0.PH.0025	0,250	18	6,3 x 19	1	1,5	32	0,86
CD.0.PH.0050	0,500	11	6,3 x 19	1	1,5	36	0,86
CD.0.PH.0100	1,000	7,6	7,1 x 20,2	1	2	51	1,1
CD.0.PH.0200	2,000	3,8	7,1 x 20,2	2	2	60	2,2
CD.0.PH.0320	3,200	4,8	13 x 36	1	3,5	108	3,8
CD.0.PH.0630	6,300	2,4	13 x 36	2	3,5	138	7,6
CD.0.PH.1000	10,000	1,6	16 x 45	2	3,5	186	11,4
CD.0.PH.1600	16,000	1	16 x 45	3	3,5	327	17,1
CD.0.PH.2000	20,000	0,8	16 x 45	4	3,5	383	22,8

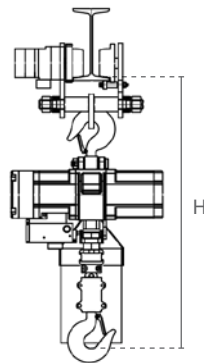
Specifications	
Load chain	Galvanised RUD® load chain according to EN 818-7-DAT/DT
Control	Standard with toggle cord control supplied to match the lifting height. On request with manual valve control.
Housing protection	IP 54
Classification	M5/2m (ISO/FEM)
Duty cycle / Starts per hour	40% / 240
Operating temperature	-10°C - +40°C
ATEX zone	ATEX Zone 2 CE EX II 3G IIB T3 / 3D T200°C
Load type	Goods, may not be used to lift or transport people

Protection	
Overload protection	Overload protection shuts off main air supply and engages the brake by monitoring the air pressure
Brake	Safety brake, holds the load when the air is cut off
Limit switch	Upper and lower limit switch, shuts off main air supply



Pneumatic chain hoist

Specifications						
Capacity	Air pressure	Air consumption	Sound level while lifting	Sound level while lowering	Air inlet	Main air supply
ton	bar	m³/min (6 bar)	dB	dB	mm	mm
0,250	4-6	2	85	82	12,7	19,1
0,500	4-6	2	85	82	12,7	19,1
1,000	4-6	2	85	82	12,7	19,1
2,000	4-6	2	85	82	12,7	19,1
3,200	4-6	4	90	87	19,1	50,8
6,300	4-6	4	90	87	19,1	50,8
10,000	4-6	4	90	87	25,4	50,8
16,000	4-6	4	90	87	25,4	50,8
20,000	4-6	4	90	87	25,4	50,8



Features

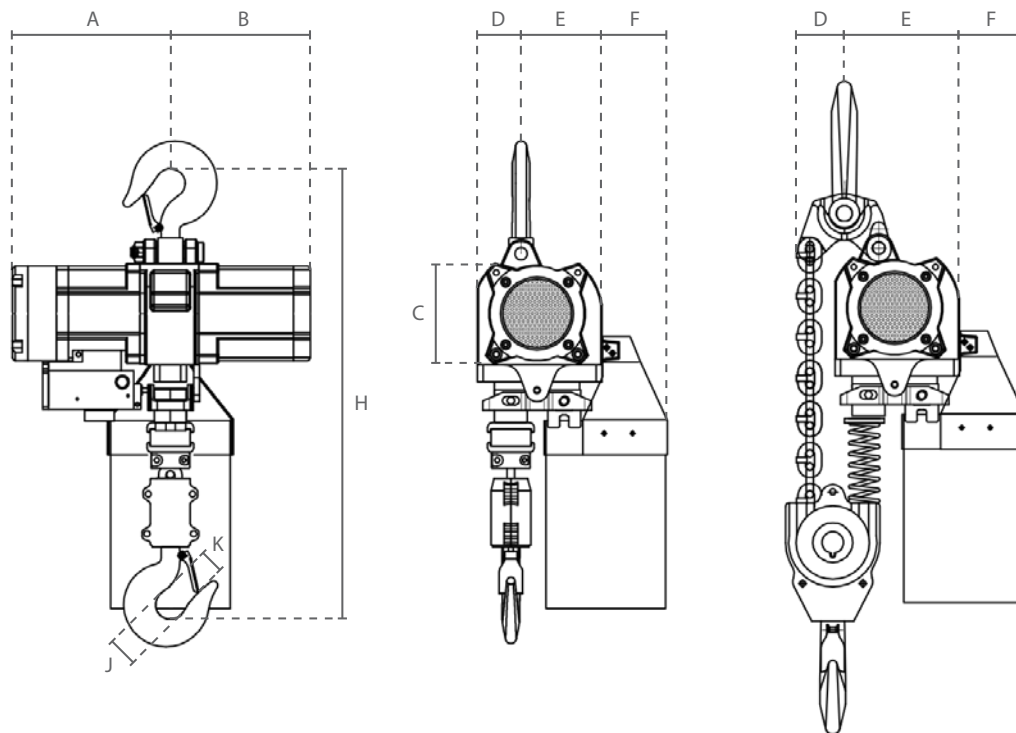
- » Pneumatic chain hoist mounted on low headroom pneumatic trolley.
- » Safety bars serve as fall-, breaking- and impact protection. Additionally equipped with tilting protection.
- » Permanently lubricated, ball bearing mounted wheels allow for smooth traversing.
- » Suitable for most I- and H-beam profiles.

Specifications							
Article code	Capacity	Traversing speed	Power output	Beam width	Min. radius	Net weight	Min. height (H)
	ton	m/min	kW (6 bar)	mm	m	kg	mm
CD.0.PT.005	0,500		0,2				
CD.0.PT.010	1,000	20	0,2	75-125	1,3	32	621
CD.0.PT.020	2,000	20	0,2	100-150	1,5	40	751
CD.0.PT.032	3,200	10	0,2	125-175	1,8	55	902
CD.0.PT.063	6,300	4	0,2	125-175	3	70	1125

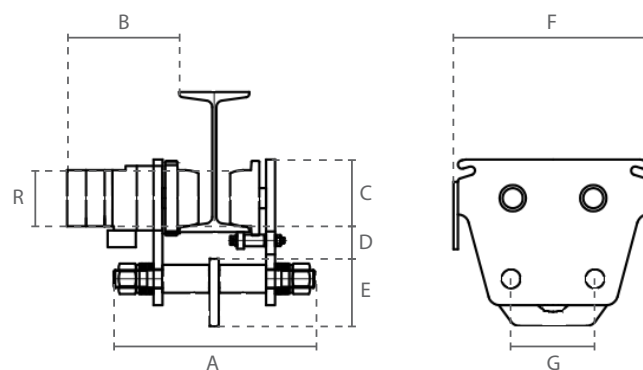
Specifications			
Capacity	Air pressure	Air consumption	Air inlet
ton	bar	m³/min (6 bar)	mm
0,500	6	0,6	19,1
1,000	6	0,6	19,1
2,000	6	0,6	19,1
3,200	6	0,6	19,1
6,300	6	0,6	19,1



Pneumatic chain hoist



Dimensions (mm)									
Article code	A	B	C	D	E	F	H	J	K
CD.0.PH.0025	197	174	110	70	70	104	535	40	32
CD.0.PH.0050	228	174	110	70	70	104	535	40	32
CD.0.PH.0100	255	205	132	65	95	91	540	40	32
CD.0.PH.0200	255	205	132	73	87	159	760	46	40
CD.0.PH.0320	313	246	166	77	142	115	814	52	47
CD.0.PH.0630	313	246	166	77	142	115	1022	62	52
CD.0.PH.1000	308	308	238	170	156	-	1100	75	69
CD.0.PH.1600	374	372	238	166	160	-	1350	120	109
CD.0.PH.2000	374	372	238	166	160	-	1400	120	109



Dimensions (mm)								
Article code	A	B	C	D	E	F	G	R
CD.0.PT.005								
CD.0.PT.010	264	208	83	56	102	294	125	78
CD.0.PT.020	300	210	95	48	115	322	130	90
CD.0.PT.032	360	217	105	48	120	356	150	100
CD.0.PT.063	365	219	145	77	264	386	280	140