

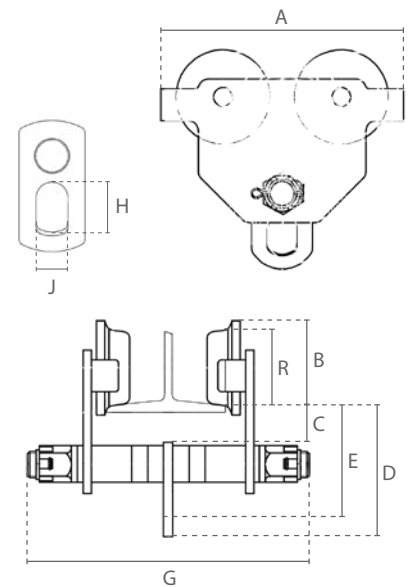


Stainless steel push trolley



Features

- » Maximum protection against corrosive and high humidity environments.
- » Suitable for cleanrooms and food-industry applications.
- » All parts (except bearings) made from highly corrosion resistant 304(V2A) stainless steel. Bolts made from 2Cr13 stainless steel.
- » Customisable by adjusting the spacers.
- » Safety bars serve as fall-, breaking- and impact protection. Additionally equipped with tilting protection.
- » Permanently lubricated, ball bearing mounted wheels allow for smooth traversing.
- » Suitable for most I- and H-beam profiles.
- » Complies with the Machinery Directive 2006/42/EC. Supplied with test certificate, CE declaration of conformity and operating instructions.



Specifications

Article code	Capacity	Suitable beam width	Min. radius	Wheel diameter (R)	Net weight
	ton	mm	m	mm	kg
DSS.0.02600500	0,500	50-152	0,8	57	9
DSS.0.02601000	1,000	64-203	1	73	12
DSS.0.02602000	2,000	88-203	1,1	86	20
DSS.0.02603000	3,000	100-203	1,3	106	29
DSS.0.02605000	5,000	114-203	1,4	118	44

Dimensions (mm)

Capacity	A	B	C	D	E	G	H	J
0,500	199	68	30	119	104	245	32	25
1,000	246	84	27	145	127	327	40	30
2,000	276	97	27	171	156	345	52	38
3,000	332	119	37	200	178	367	63	40
5,000	377	131	38	228	198	378	75	50