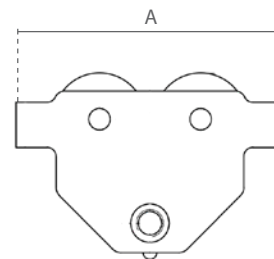
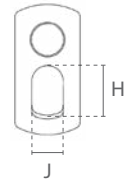
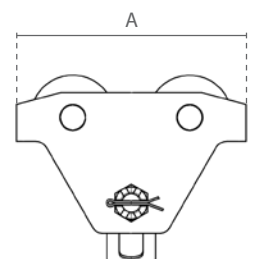




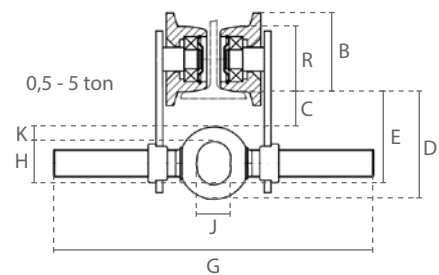
Push trolley



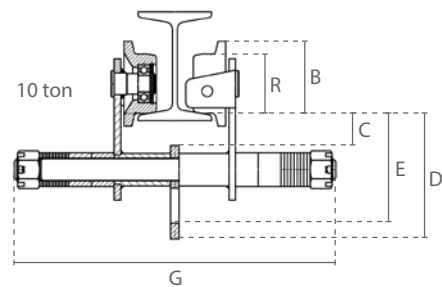
0,5 - 5 ton



10 ton



0,5 - 5 ton



10 ton

Features

- » Individually adjustable by turning the bolt. From 10 ton customisable by adjusting the spacers.
- » Safety bars serve as fall-, breaking- and impact protection. Additionally equipped with tilting protection.
- » Permanently lubricated, ball bearing mounted wheels allow for smooth traversing.
- » Suitable for most I- and H-beam profiles.
- » Complies with the Machinery Directive 2006/42/EC. Supplied with test certificate, CE declaration of conformity and operating instructions.

| Specifications | | | | | |
|----------------|----------|---------------------|-------------|--------------------|------------|
| Article code | Capacity | Suitable beam width | Min. radius | Wheel diameter (R) | Net weight |
| | ton | mm | m | mm | kg |
| DR.0.02600500 | 0,500 | 50-305 | 0,5 | 55 | 5,4 |
| DR.0.02601000 | 1,000 | 58-305 | 0,7 | 68 | 9,3 |
| DR.0.02602000 | 2,000 | 66-305 | 0,9 | 80 | 14,8 |
| DR.0.02603000 | 3,000 | 74-305 | 1,2 | 100 | 24,1 |
| DR.0.02605000 | 5,000 | 90-305 | 1 | 120 | 41,1 |
| DR.0.03610000 | 10,000 | 130-305 | 1,2 | 150 | 89,8 |

| Dimensions (mm) | | | | | | | | | |
|-----------------|-----|-----|----|-----|-----|-----|----|-----|----|
| Capacity | A | B | C | D | E | G | H | J | K |
| 0,500 | 198 | 68 | 40 | 94 | 82 | 385 | 28 | 25 | 13 |
| 1,000 | 238 | 82 | 31 | 102 | 85 | 388 | 37 | 29 | 17 |
| 2,000 | 277 | 95 | 31 | 119 | 99 | 405 | 48 | 36 | 20 |
| 3,000 | 324 | 116 | 31 | 139 | 113 | 429 | 56 | 46 | 26 |
| 5,000 | 373 | 138 | 40 | 161 | 133 | 435 | 65 | 52 | 28 |
| 10,000 | 467 | 165 | 40 | 318 | 273 | 513 | 72 | 115 | - |