

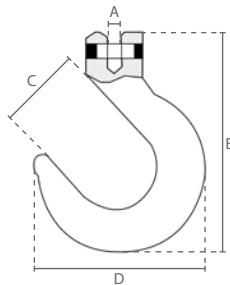


Rigging equipment according to EN 1677 Grade 80

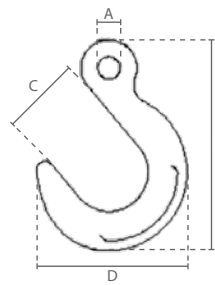
Clevis foundry hooks  
 Eye foundry hooks  
 Clevis forestry hooks



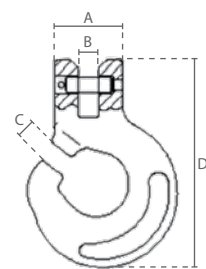
YE.8.048



YE.8.047



YE.8.075



Specifications			Dimensions (mm)			
Article code	Capacity (ton)	Weight (kg)	A	B	C	D
YE.8.048.08	2,000	1,1	10	161	64	128
YE.8.048.10	3,150	2,5	13	199	77	156

Specifications			Dimensions (mm)			
Article code	Capacity (ton)	Weight (kg)	A	B	C	D
YE.8.047.06	1,120	1,0	18	163	64	120
YE.8.047.08	2,000	1,1	18	163	64	120
YE.8.047.10	3,150	2,1	22	200	76	146
YE.8.047.13	5,300	3,2	27	238	89	171
YE.8.047.16	8,000	5,6	32	278	102	198
YE.8.047.20	12,500	8,8	38	325	115	232
YE.8.047.22	15,000	12,0	45	361	128	256
YE.8.047.26	21,200	17,0	68	402	140	283
YE.8.047.32	31,500	26,6	82	461	154	327

Specifications			Dimensions (mm)			
Article code	Capacity (ton)	Weight (kg)	A	B	C	D
YE.8.075.08	2,000	0,5	35	10	11	96
YE.8.075.10	3,150	1,0	44	13	13	137
YE.8.075.13	5,300	1,8	53	15	16	165