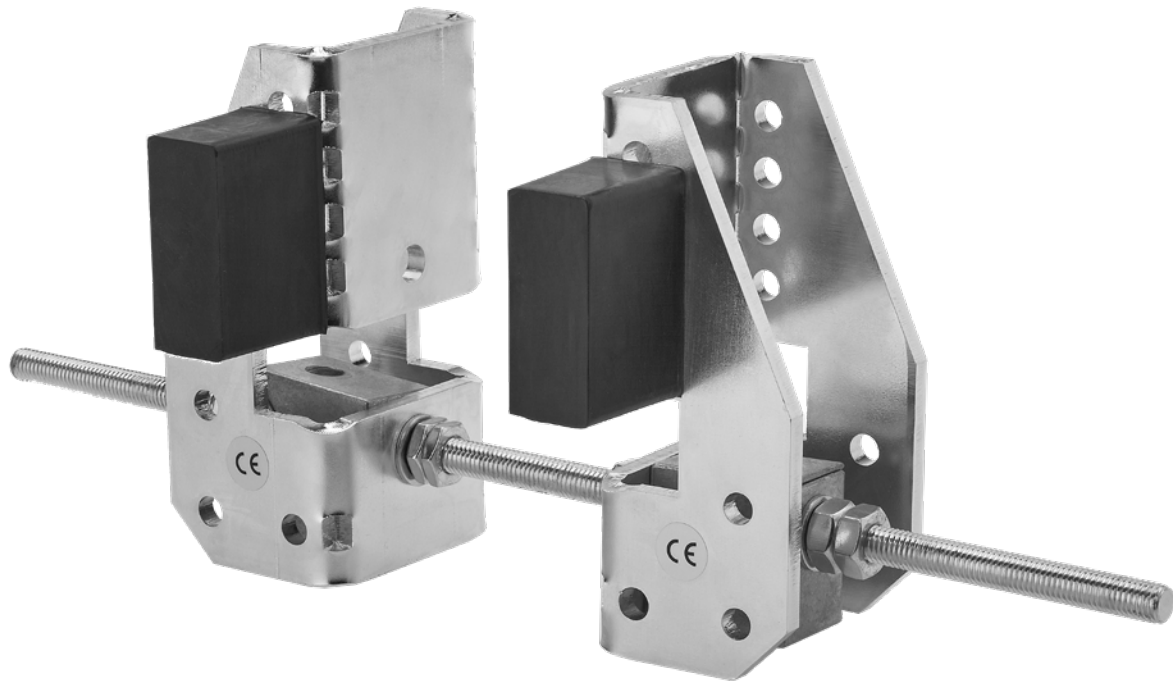
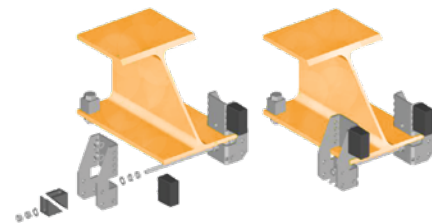




Trolley buffer

 **Features**

- » Universally applicable as end stop or mobile limitation of the trolley.
- » Easy and quick to install without drilling or welding.
- » Suitable for all DELTA[®] manual- and electric trolleys up to 10 ton from this catalog.
- » Suitable for most I- and H-beam profiles up to 25mm beam thickness.
- » Complies with the Machinery Directive 2006/42/EC. Supplied with test certificate, CE declaration of conformity and operating instructions.



Specifications			
Article code	Suitable beam width	Net weight	Length of threaded rod
	mm	kg	mm
DHST.006	82-300	2,5	370

Specifications		
Hoist capacity	Max. permitted weight of hoisting equipment	Max. permitted speed
ton	kg	m/min
< 2,000	160	25
2,000	250	20
3,000	250	20
4,000	250	20
5,000	400	20
6,000	400	20
8,000	900	16
10,000	900	16