



Grado 80 Accesorios según EN 1677 / Grade 80 Accessories according to EN 1677

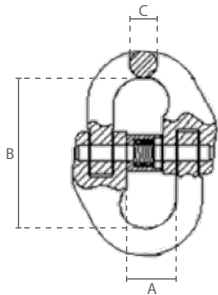
7. Mallas de union / Connecting links

8. Mallas de union para eslingas redondas / Connecting links for round slings

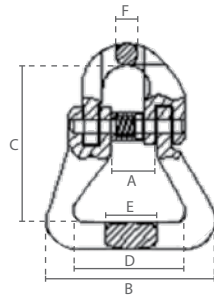
9. Ganchos de horquilla con pestillo de seguridad / Clevis hooks with latch



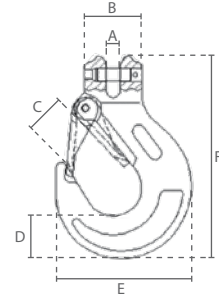
YE.8.015



YE.8.016



YE.8.043



7 Especificaciones / Specifications			Dimensiones / Dimensions (mm)		
Código de artículo	Capacidad / Capacity	Peso / Weight	A	B	C
Article code	ton	kg			
YE.8.015.06	1.12	0.08	15	42	8
YE.8.015.07	1.50	0.15	19	55	9
YE.8.015.08	2.00	0.16	20	61	10
YE.8.015.10	3.15	0.3	25	68	12
YE.8.015.13	5.30	0.7	29	87	15
YE.8.015.16	8.00	1.2	35	109	20
YE.8.015.20	12.50	2.1	41	122	24
YE.8.015.22	15.00	2.9	48	142	26
YE.8.015.26	21.20	4.5	58	158	31
YE.8.015.32	31.50	8.2	67	205	38

8 Especificaciones / Specifications			Dimensiones / Dimensions (mm)					
Código de artículo	Capacidad / Capacity	Peso / Weight	A	B	C	D	E	F
Article code	ton	kg						
YE.8.016.06	1.12	0.2	15	60	56	40	18	7
YE.8.016.08	2.00	0.3	20	62	64	40	24	10
YE.8.016.10	3.15	0.7	24	66	83	39	31	11
YE.8.016.13	5.30	1.5	28	88	94	55	37	17
YE.8.016.16	8.00	2.3	35	108	120	66	46	20
YE.8.016.20	12.50	3.3	41	129	138	80	52	23
YE.8.016.22	15.00	6.4	50	191	180	126	70	26
YE.8.016.26	21.20	10.7	58	229	210	152	86	30
YE.8.016.32	31.50	18.9	73	252	279	160	91	55

9 Especificaciones / Specifications			Dimensiones / Dimensions (mm)					
Código de artículo	Capacidad / Capacity	Peso / Weight	A	B	C	D	E	F
Article code	ton	kg						
YE.8.043.06	1.12	0.4	8	32	20	20	68	108
YE.8.043.08	2.00	0.6	10	39	24	25	86	131
YE.8.043.10	3.15	1.0	13	48	28	36	106	164
YE.8.043.13	5.30	1.5	17	55	35	42	130	196
YE.8.043.16	8.00	3.5	19	66	43	47	156	236
YE.8.043.20	12.50	6.8	24	92	52	51	180	281
YE.8.043.22	15.00	10.0	27	91	70	63	220	315
YE.8.043.26	21.20	15.0	30	117	85	75	252	325
YE.8.043.32	31.50	27.0	35	150	106	88	300	405