



Grilletes / Shackles

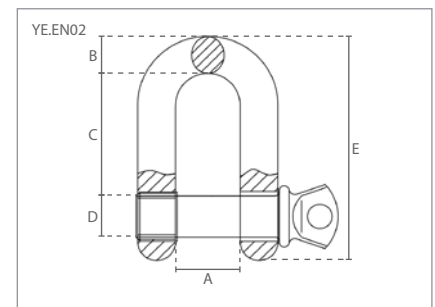
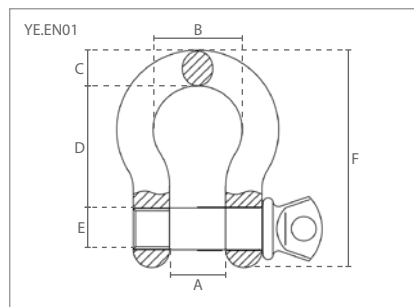
1. Grilletes de lira con pernos roscados / Screw pin anchor shackles
2. Grilletes rectos con pernos roscados / Screw pin chain shackles

Características

- » Según EN 13889 et U.S. Fed Spec RR-C-271.
- » Forjado y galvanizado en caliente.
- » Marcado con:
CE / DELTA / WLL / Carga / 6.
- » Temperatura de funcionamiento:
-20°C - +200°C
- » Se suministra con certificado de pruebas y declaración de conformidad CE.

Features

- » According to EN 13889 and U.S. Fed Spec RR-C-271.
- » Forged and hot-dip galvanized.
- » Marked with:
CE / DELTA / WLL / Batch / 6
- » Operating temperature:
-20°C - +200°C
- » Supplied with test certificate and CE declaration of conformity.



1 Especificaciones / Specifications				Dimensiones / Dimensions (mm)					
Código de artículo	Capacidad / Capacity	MBL	Peso / Weight	A	B	C	D	E	F
Article code	ton	ton	kg						
YE.EN01.01	1.00	6.00	0.2	17	26	10	36	11	64
YE.EN01.01.5	1.50	9.00	0.2	19	26	12	42	13	74
YE.EN01.02	2.00	12.00	0.3	21	34	14	47	16	85
YE.EN01.03.25	3.25	19.5	0.7	27	43	16	60	19	107
YE.EN01.04.75	4.75	28.5	1.1	32	51	19	71	22	127
YE.EN01.06.50	6.50	39.00	1.7	37	58	23	83	25	148
YE.EN01.08.50	8.50	51.00	2.5	43	64	26	95	28	167
YE.EN01.09.50	9.50	57.00	3.8	46	74	30	100	32	190
YE.EN01.12	12.00	72.00	5.0	52	83	33	107	35	210
YE.EN01.13.5	13.50	81.00	6.1	57	92	36	122	38	233
YE.EN01.17	17.00	102.00	8.2	61	98	39	135	42	254
YE.EN01.25	25.00	150.00	16.9	74	126	47	145	51	314
YE.EN01.35	35.00	210.00	21.6	83	146	53	177	57	348

2 Especificaciones / Specifications				Dimensiones / Dimensions (mm)				
Código de artículo	Capacidad / Capacity	MBL	Peso / Weight	A	B	C	D	E
Article code	ton	ton	kg					
YE.EN02.01	1.00	6.00	0.2	17	10	30	11	59
YE.EN02.01.50	1.50	9.00	0.2	19	12	35	13	68
YE.EN02.02.00	2.00	12.00	0.3	21	13	40	16	77
YE.EN02.03.25	3.25	19.5	0.6	27	16	50	19	98
YE.EN02.04.75	4.75	28.5	1.0	32	19	55	22	117
YE.EN02.06.50	6.50	39.00	1.5	37	23	70	25	135
YE.EN02.08.50	8.50	51.00	2.2	43	26	80	28	153
YE.EN02.09.50	9.50	57.00	3.2	46	29	90	32	172
YE.EN02.12	12.00	72.00	4.5	52	33	100	35	191
YE.EN02.13.5	13.50	81.00	5.6	57	36	110	38	207
YE.EN02.17	17.00	102.00	7.3	61	38	120	42	230
YE.EN02.25	25.00	150.00	13.2	74	45	145	51	279
YE.EN02.35	35.00	210.00	20.2	83	53	170	57	325
YE.EN02.55	55.00	330.00	31.5	105	63	200	68	365



Grilletes / Shackles

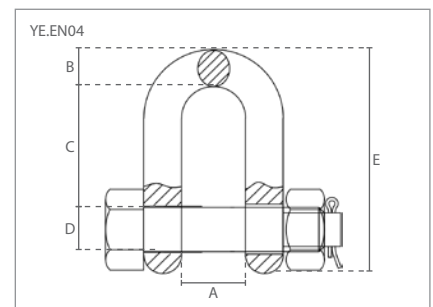
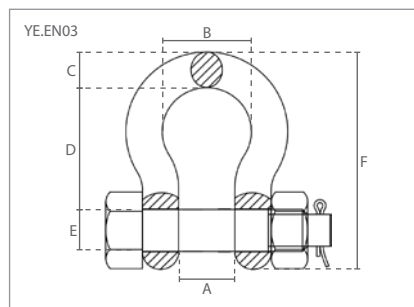
3. Grilletes de lira con eje atornillado / Bolt type anchor shackles
4. Grilletes rectos con pasador de perno / Bolt type chain shackles

Características

- » Según EN 13889 et U.S. Fed Spec RR-C-271.
- » Forjado y galvanizado en caliente.
- » Marcado con:
CE / DELTA / WLL / Carga / 6.
- » Temperatura de funcionamiento:
-20°C - +200°C
- » Se suministra con certificado de pruebas y declaración de conformidad CE.

Features

- » According to EN 13889 and U.S. Fed Spec RR-C-271.
- » Forged and hot-dip galvanized.
- » Marked with:
CE / DELTA / WLL / Batch / 6
- » Operating temperature:
-20°C - +200°C
- » Supplied with test certificate and CE declaration of conformity.



3 Especificaciones / Specifications				Dimensiones / Dimensions (mm)					
Código de artículo	Capacidad / Capacity	MBL	Peso / Weight	A	B	C	D	E	F
Article code	ton	ton	kg						
YE.EN03.001	1.00	6.00	0.2	17	26	10	36	11	64
YE.EN03.001.5	1.50	9.00	0.2	19	30	12	42	13	74
YE.EN03.002	2.00	12.00	0.4	21	34	14	47	16	85
YE.EN03.003.25	3.25	19.5	0.7	27	43	18	60	19	107
YE.EN03.004.75	4.75	28.5	1.2	32	51	21	71	22	127
YE.EN03.006.5	6.50	39.00	1.8	37	58	25	83	25	148
YE.EN03.008.5	8.50	51.00	2.7	43	69	27	95	28	167
YE.EN03.009.5	9.50	57.00	3.9	46	74	32	107	32	190
YE.EN03.012	12.00	72.00	5.7	52	83	35	122	35	210
YE.EN03.013.5	13.50	81.00	6.9	57	92	36	135	38	233
YE.EN03.017	17.00	102.00	8.9	61	98	41	145	42	254
YE.EN03.025	25.00	150.00	18	74	126	58	177	51	314
YE.EN03.035	35.00	210.00	25	83	146	61	195	57	348
YE.EN03.055	55.00	330.00	45	125	180	78	263	70	450

4 Especificaciones / Specifications				Dimensiones / Dimensions (mm)				
Código de artículo	Capacidad / Capacity	MBL	Peso / Weight	A	B	C	D	E
Article code	ton	ton	kg					
YE.EN04.001	1.00	6.00	0.2	17	10	30	11	59
YE.EN04.001.5	1.50	9.00	0.2	19	12	35	13	68
YE.EN04.002	2.00	12.00	0.3	21	13	40	16	77
YE.EN04.003.25	3.25	19.5	0.7	27	18	50	19	98
YE.EN04.004.75	4.75	28.5	1.1	32	21	55	22	117
YE.EN04.006.5	6.50	39.00	1.7	37	25	70	25	136
YE.EN04.008.5	8.50	51.00	2.4	43	27	80	28	153
YE.EN04.009.5	9.50	57.00	3.6	46	32	90	32	173
YE.EN04.012	12.00	72.00	5.0	52	35	100	35	191
YE.EN04.013.5	13.50	81.00	6.4	57	35	110	38	207
YE.EN04.017	17.00	102.00	8.1	61	41	120	42	230
YE.EN04.025	25.00	150.00	15.4	74	54	145	51	279
YE.EN04.035	35.00	210.00	22.9	83	61	170	57	325
YE.EN04.055	55.00	330.00	40.2	105	67	202	70	378