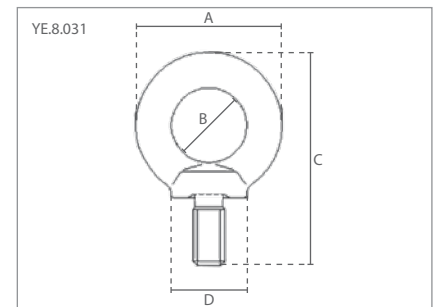
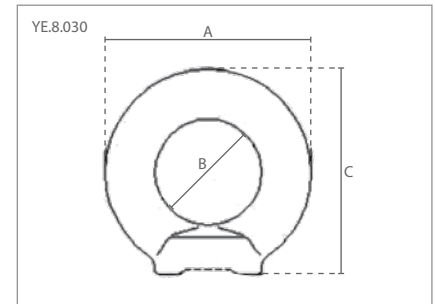




Anschlagteile Güteklasse 8 nach EN 1677 / Elingues grade de qualité 8 selon EN 1677

36. Ringmuttern / Ecrous à oeil
37. Ringschrauben / Boulons à oeil



36 Technische Daten / Spécifications						Abmessungen / Dimensions (mm)			
Artikelnummer	Tragfähigk. / Capacité	Tragfähigk. / Capacité	Gewicht / Poids	Drehmoment / Torque	M	A	B	C	
Code de l'article	(0°) ton	(90°) ton	kg	N·m					
YE.8.030.06	0.40	0.15	0.05	10-15	M6	36	20	36	
YE.8.030.08	0.80	0.40	0.05	10-15	M8	36	20	36	
YE.8.030.10	1.00	0.40	0.09	10-15	M10	45	25	45	
YE.8.030.12	2.00	0.75	0.16	10-15	M12	54	30	53	
YE.8.030.14	3.00	1.00	0.24	20-30	M14	63	35	62	
YE.8.030.16	4.00	1.50	0.24	20-30	M16	63	35	62	
YE.8.030.18	5.00	2.00	0.34	20-30	M18	72	40	71	
YE.8.030.20	6.00	2.30	0.36	50-70	M20	72	40	71	
YE.8.030.22	7.00	2.80	0.6	50-70	M22	81	45	81	
YE.8.030.24	8.00	3.20	0.7	130-160	M24	90	50	90	
YE.8.030.27	10.00	4.00	0.7	180-220	M27	90	50	90	
YE.8.030.30	12.00	4.50	1.3	200-250	M30	108	60	109	
YE.8.030.36	16.00	7.00	2.1	280-400	M36	126	70	128	
YE.8.030.39	20.00	8.00	2.6	280-400	M39	126	70	128	
YE.8.030.42	24.00	9.00	3.1	500-650	M42	144	80	147	
YE.8.030.48	32.00	12.00	5.0	500-650	M48	166	90	168	
YE.8.030.56	40.00	15.00	6.7	600-900	M56	184	100	187	
YE.8.030.64	50.00	17.00	9.3	600-900	M64	206	110	208	

37 Technische Daten / Spécifications						Abmessungen / Dimensions (mm)			
Artikelnummer	Tragfähigk. / Capacité	Tragfähigk. / Capacité	Gewicht / Poids	Drehmoment / Torque	M	A	B	C	D
Code de l'article	(0°) ton	(90°) ton	kg	N·m					
YE.8.031.06	0.40	0.15	0.03	10-15	M6x13	28	16	42	17
YE.8.031.08	0.80	0.40	0.06	10-15	M8x15	36	20	51	20
YE.8.031.10	1.00	0.40	0.11	10-15	M10x18	45	25	63	25
YE.8.031.12	2.00	0.75	0.18	10-15	M12x22	54	30	75	30
YE.8.031.14	3.00	1.00	0.28	20-30	M14x28	63	35	90	35
YE.8.031.16	4.00	1.50	0.29	20-30	M16x28	63	35	90	35
YE.8.031.18	5.00	2.00	0.42	20-30	M18x30	72	40	101	40
YE.8.031.20	6.00	2.30	0.45	20-30	M20x30	72	40	101	40
YE.8.031.22	7.00	2.80	0.67	50-70	M22x35	81	45	116	45
YE.8.031.24	8.00	3.20	0.95	130-160	M24x38	90	50	128	50
YE.8.031.27	10.00	4.00	0.96	180-220	M27x38	90	60	128	65
YE.8.031.30	12.00	4.50	1.8	200-250	M30x45	108	60	154	65
YE.8.031.33	14.00	5.00	1.8	250-270	M33x45	108	60	154	65
YE.8.031.36	16.00	7.00	2.7	280-400	M36x55	126	70	183	75
YE.8.031.39	20.00	8.00	2.8	280-400	M39x55	126	70	183	75
YE.8.031.42	24.00	9.00	4.1	500-600	M42x65	144	80	212	85
YE.8.031.45	28.00	10.00	4.3	500-600	M45x65	144	80	212	85
YE.8.031.48	32.00	12.00	6.4	500-650	M48x70	166	90	238	100
YE.8.031.56	40.00	15.00	8.8	600-900	M56x80	184	100	267	110
YE.8.031.64	50.00	17.00	12.4	600-900	M64x90	206	110	293	120